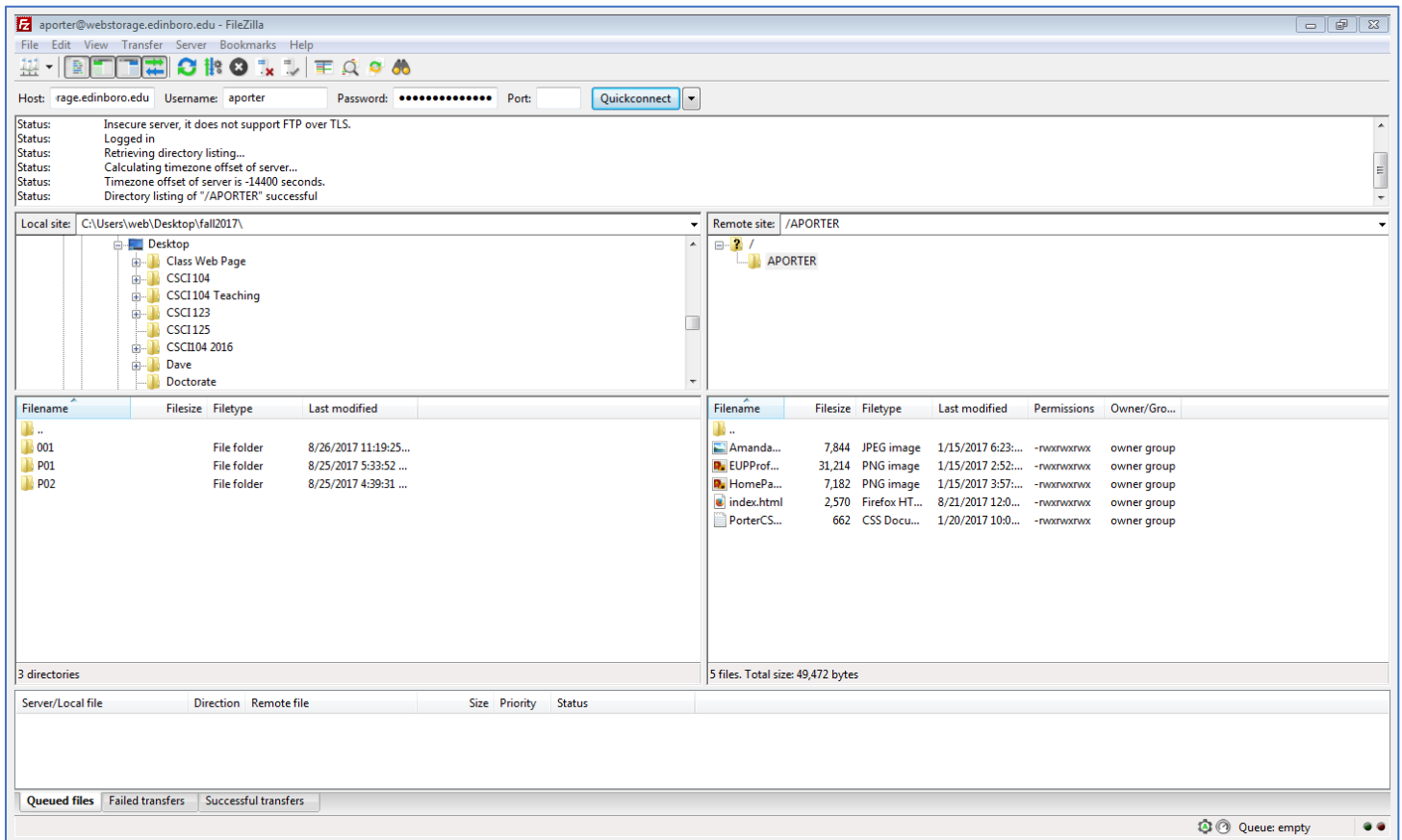


How to Access the S: Drive when Off Edinboro Campus - FileZilla

1. Download and install FileZilla:
 - a. <https://filezilla-project.org/download.php>
 - b. Click the green Download FileZilla Client button (under Windows 64bit)
 - c. Save installer
 - d. Hit Run – Yes – Next – I Agree – No, I don't want a free upgrade – Next – Next – Finish
2. Go to Start – All Programs – FileZilla FTP Client – FileZilla – Hit OK
3. Host: **storage.edinboro.edu**
4. Username: **EUP username (Ex: ap123456)**
5. Password: **EUP password**
6. **Quickconnect**
7. Do NOT save password



*Directory structure on local machine shown on the left side and directory structure on S: Drive shown on the right side

*To copy files from one location to the other, just select the file and drag to the desired location on the opposite side